

bullfrog[™]
spas





bullfrog
spas

Asst
A



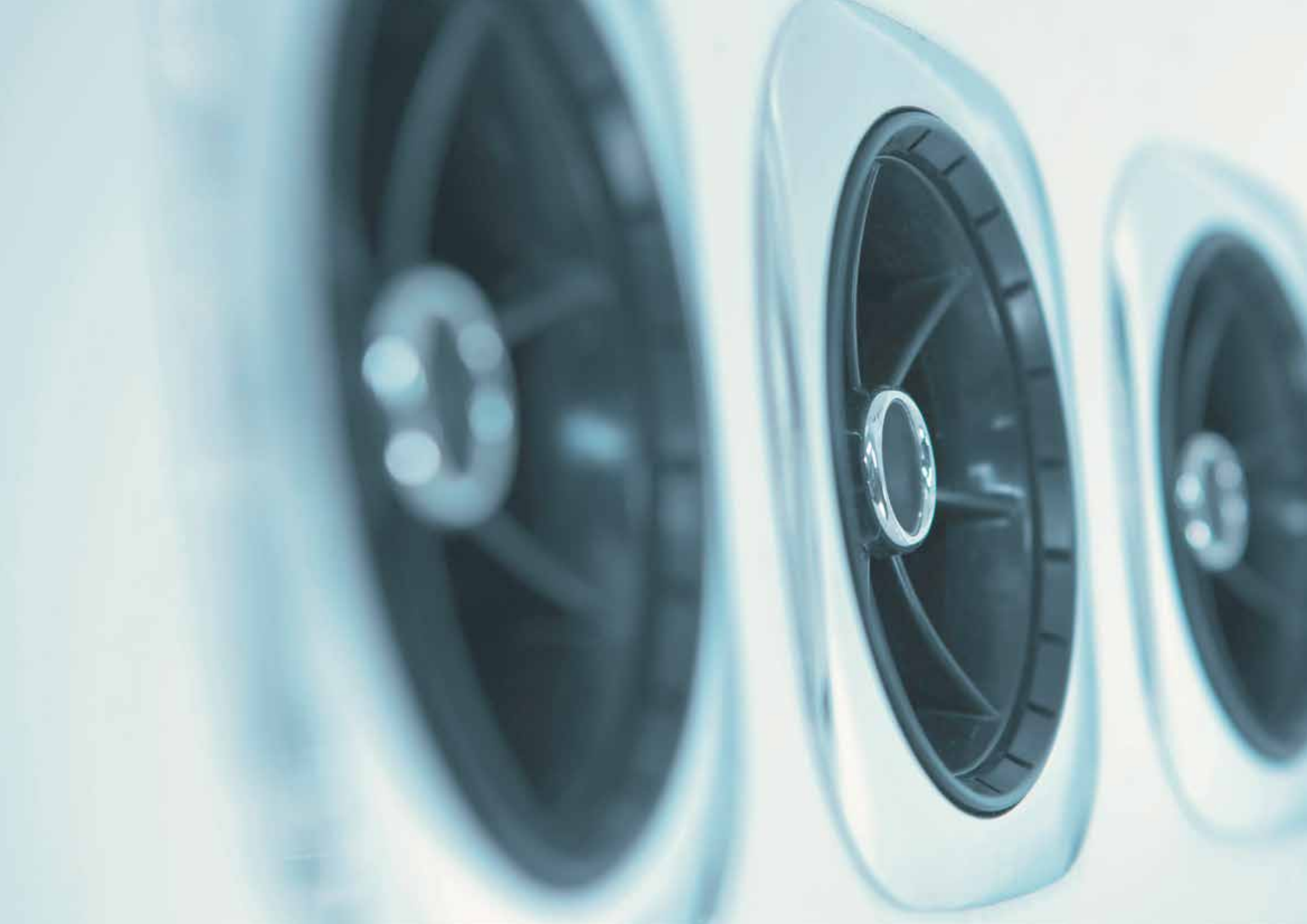
PERSONAL SPAS

PERFECTED

Occasionally a product design comes along that is so uniquely matched to its purpose that you must say – this is perfect.

The all new Bullfrog Spas combine the patented JetPak Therapy System™, cutting-edge engineering, daring design, comfort and unmatched quality. The result: the personal spa, perfected.

Discover how Bullfrog Spas is engineering your perfect spa experience.





PEACE THROUGH

ENGINEERING



CLOUDCONTROL™

EVERYWHERE...

CONTROL & MONITOR

With Bullfrog Spas' exclusive CloudControl app you can control and monitor your spa from anywhere with your smartphone or app-enabled device. Adjust settings from the comfort of your living room. Check on your spa while on vacation. Dial up the perfect temperature from work.

Spa ownership is now easier than ever.

ANYWHERE...



*CloudControl WiFi module optional on A & R Series spas. Standard data rates apply. Subscription cloud service free during first year of ownership.

SOOTHING

SOUND

Relaxation, therapy, and good times are all enhanced by your soundtrack.

Bullfrog Spas' Elite Audio System includes seat surround speakers and a powered sub-woofer to immerse you with rich high-quality sound. Protect and charge your iPod, iPhone, or other digital music player right in the spa-side water-proof housing. Or, simply connect via Bluetooth and stream your favourite playlists.



Standard on A Series. Optional on R Series.





A close-up, high-angle photograph of a white plastic spa seat mechanism, showing various components like the seat base, backrest, and internal hardware. The lighting is dramatic, highlighting the textures and shapes of the plastic parts against a dark background.

JETPAK THERAPY

SYSTEM™

You deserve the best spa experience, and that means a spa that is personalised just for you.

Bullfrog Spas created the JetPak Therapy System to allow you to fit your spa to your body and lifestyle. Only Bullfrog Spas let you select your perfect massages, move them from seat to seat, and upgrade at any time.

JETPAK THERAPY SYSTEM



0

..... PLUMBING

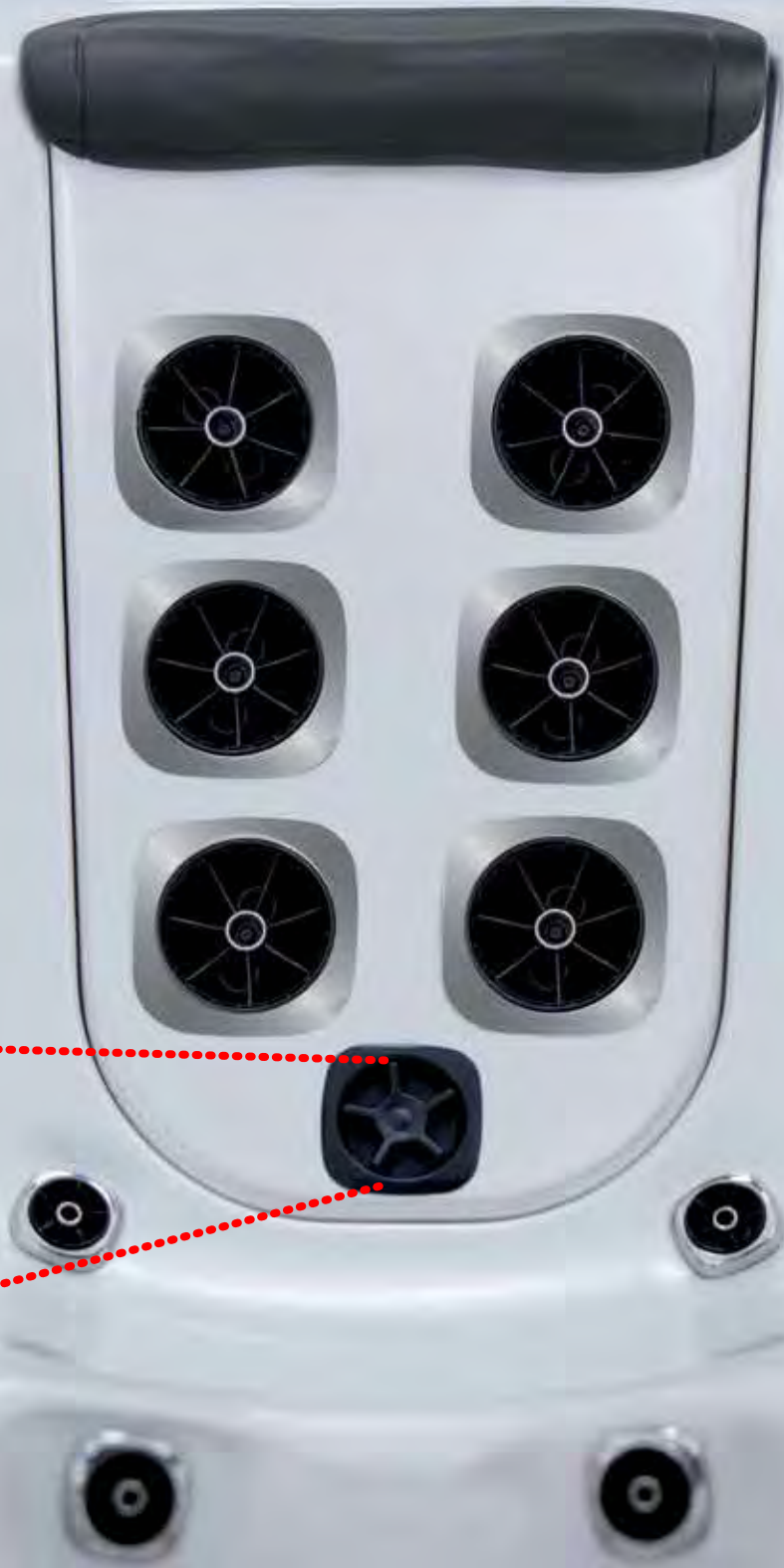
100%

..... PERFORMANCE

The plumbing used in other spas is inefficient, expensive, and unreliable. Bullfrog Spas' exclusive H₂Air Manifold is one simple self-contained seat-back unit. The result is far less plumbing, greater efficiency, and optimal performance.

DIALED IN

Every aspect of the JetPak Therapy System was re-imagined and re-engineered to deliver the best personalised therapy and performance. With JetPaks® you are in complete control of your massage experience.



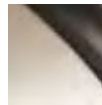


bullfrog
spa
A¹⁰⁰



A SERIES

PREMIUM LUXURY



Advanced and stylish, yet elegantly simple, the A Series sets a new standard in spa excellence.



SIZE 2390mm x 2390mm x 970mm
WATER CAPACITY 1998 liters
DRY WEIGHT 344 kg
FILLED WEIGHT 2342 kg
JETPAKS 6
INDUSTRIAL PUMPS 2
ECO FILTRATION PUMP 1

A8

6
comfort pillows

8
available seats

1
A-touch display
(optional on all A-Series spas)



A8L

SIZE 2390mm x 2390mm x 970mm
WATER CAPACITY 1908 liters
DRY WEIGHT 353 kg
FILLED WEIGHT 2261 kg
JETPAKS 6
INDUSTRIAL PUMPS 2
ECO FILTRATION PUMP 1



6

custom JetPaks

7

available seats

2

auxilliary remotes



SIZE 2390mm x 2390mm x 970mm
WATER CAPACITY 1938 liters
DRY WEIGHT 346 kg
FILLED WEIGHT 2284 kg
JETPAKS 5
INDUSTRIAL PUMPS 2
ECO FILTRATION PUMP 1

A8D





2
full comfort lounges

5
available seats

18
premium body jets



A7

SIZE	2240mm x 2240mm x 910mm
WATER CAPACITY	1643 liters
DRY WEIGHT	300 kg
FILLED WEIGHT	1943 kg
JETPAKS	5
INDUSTRIAL PUMPS	2
ECO FILTRATION PUMP	1



8

available seats

\$25

per month EST*

*Estimated monthly operating cost based on \$0.21 per kw/h, 16°C ambient temperature, 38°C water temperature and CEC reported data.







SIZE	2240mm x 2240mm x 910mm
WATER CAPACITY	1666 liters
DRY WEIGHT	308 kg
FILLED WEIGHT	1976 kg
JETPAKS	5
INDUSTRIAL PUMPS	2
ECO FILTRATION PUMP	1

A7L

2
captains chairs

6
available seats

1
full comfort lounge



A 6 L

SIZE	2030mm x 2240mm x 860mm
WATER CAPACITY	1324 liters
DRY WEIGHT	261 kg
FILLED WEIGHT	1585 kg
JETPAKS	4
INDUSTRIAL PUMPS	1
ECO FILTRATION PUMP	1



1

Cascadia water feature
(standard on all A Series spas)



6

available seats

\$23
per month EST*

*Estimated monthly operating cost based on \$.21 per kw/h, 16°C ambient temperature, 38°C water temperature and CEC reported data.







SIZE	2240mm x 2240mm x 860mm
WATER CAPACITY	1324 liters
DRY WEIGHT	261 kg
FILLED WEIGHT	1585 kg
JETPAKS	4
INDUSTRIAL PUMPS	1
ECO FILTRATION PUMP	1

A6

1

Full Colour Control Pad

6

available seats

4

exterior sconce lights
(standard on all A Series spas)



A5L

SIZE	1730mm x 2130mm x 790mm
WATER CAPACITY	920 liters
DRY WEIGHT	206 kg
FILLED WEIGHT	1126 kg
JETPAKS	3
INDUSTRIAL PUMPS	1



3
premium lit beverage bays

3
available seats

2 speed pump







CUSTOMISATION

■ VERSA™

V Tension Relief

The Versa Jetpak utilises a diverse array of jetting to move tension downward in a soothing V formation.



■ ALLEVIATE™

Perfectly Aligned Therapy

The Alleviate JetPak features 8 bio-aligned medium pressure jets with a steady-stream massage for a unique whole-back sensation.



■ PULSATOR™

Comfortable Rhythmic Massage

The Pulsator JetPak features 6 rotating dual pulse jets to provide comfortable rhythmic full-back therapy.



■ ACUTHERAPY™

Focused Stress Relief

The AcuTherapy JetPak combines deep-relief jets for the upper and lower back muscles and a medium pressure massage for the mid back.



■ **GYROSSAGE™**
Peaceful Rhythmic Sensation

The Gyrossage JetPak utilises 5 rotating single pulse jets to provide a rhythmic kneading massage for your entire back.



■ **RELIEVER™**
Maximum Relief

The Reliever JetPak combines a deep steady massage in the lower back with a medium-pressure kneading of upper obliques.



■ **DEEPRELIEF™**
Deep Tension Relief

The DeepRelief JetPak provides a steady penetrating whole-back massage for maximum tension relief.



OSCILLATOR™
Ultimate Kneading Massage

The Oscillator JetPak provides a unique wide-coverage kneading massage to soothe all key regions of your back.



NECKBLASTER™
Maximum Stress Relief

The NeckBlaster JetPak provides a one-of-a-kind massage. With the most penetrating neck and shoulder jets of any JetPak, along with a complete-back array of single pulse jets, you'll get a powerful massage that eliminates built up tension in neck and shoulder muscles.



RAINSHOWER™
Smooth Soothing Sensation

The RainShower JetPak features 42 of Bullfrog Spas' exclusive Shower Jets aligned for a smooth caressing whole-back massage.



■ **SPINALHEALTH™**
Powerful Spinal Therapy

The SpinalHealth JetPak provides a steady deep-penetrating massage for the upper and lower spinal muscles.



■ **SPINALSSAGE™**
Spinal Tension Relief

The SpinalSage JetPak provides a simple, yet highly effective, dual pulse massage for your spinal region.



■ **WELLNESS™**
All-Around Back Therapy

The Wellness JetPak combines 3 unique jet types to create an amazing whole-back massage experience.



LUMBAR™

Powerful Low-Back Therapy

The Lumbar JetPak targets key pressure points in your lower back with a deep-pressure penetrating hydromassage, combined with a rhythmic dual pulse massage for the upper back muscles.



FIBROTHERAPY™

Therapy for Pain Relief and Health

The FibroTherapy JetPak is engineered to provide a unique kneading action to relax your lower back with deep-penetrating therapy in the area of your thoracic vertebrae.



NECKMASSEUSE™

Targeted Neck Therapy

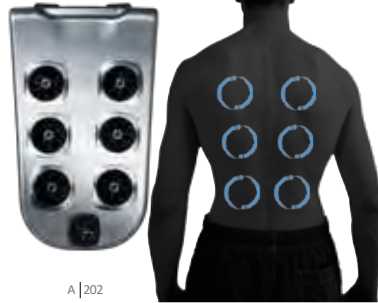
The NeckMasseuse JetPak combines a targeted deep-pressure massage for relief of neck, shoulder, and upper back tension with the rhythmic massage of 3 large rotating single-pulse jets.

JetPak® Range - Portable Spas

NeckBlaster



Pulsator



DeepRelief



AcuTherapy



Alleviate



Gyrossage



FibroTherapy



Reliever



MASSAGE TYPE

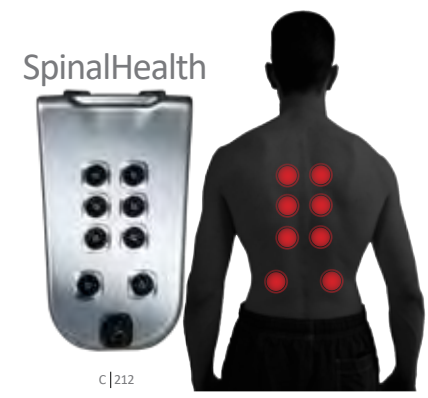
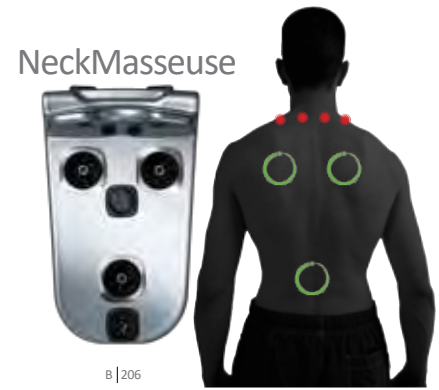
● Powerful DeepRelief Jets



Kneading Oscillator Jets



Relaxing FirmRelief Jets



*NeckBlaster and NeckMasseuse not available in matte black JetPaks.

- Rhythmic Single Pulse Jets
- Soothing RainShower Jets
- Rapid Dual Pulse Jets
- DeepRelief Neck Jets





R SERIES

AFFORDABLE LUXURY

Stunning design with uncompromising quality.
The most fully featured spa in its class.

R8L

R



SIZE	2160mm x 2160mm x 960mm
WATER CAPACITY	1983 liters
DRY WEIGHT	343 kg
FILLED WEIGHT	2326 kg
JETPAKS	4
INDUSTRIAL PUMPS	2

All R Series come with Stainless Steel Jets and Acrylic JetPaks

SERIES

AFFORDABLE LUXURY

R8



8
available seats

SIZE	2160mm x 2160mm x 960mm
WATER CAPACITY	1983 liters
DRY WEIGHT	343 kg
FILLED WEIGHT	2326 kg
JETPAKS	4
INDUSTRIAL PUMPS	2

All R Series come with Stainless Steel Jets and Acrylic JetPaks

R7L



R

SIZE	2240mm x 2240mm x 910mm
WATER CAPACITY	1613 liters
DRY WEIGHT	308 kg
FILLED WEIGHT	1921 kg
JETPAKS	4
INDUSTRIAL PUMPS	2

All R Series come with Stainless Steel Jets and Acrylic JetPaks

6
available seats

SERIES

AFFORDABLE LUXURY

R7



a touch of tranquility

8

available seats



SIZE	2240mm x 2240mm x 910mm
WATER CAPACITY	1635 liters
DRY WEIGHT	300 kg
FILLED WEIGHT	1935 kg
JETPAKS	4
INDUSTRIAL PUMPS	2

All R Series come with Stainless Steel Jets and Acrylic JetPaks

R6L

R



SIZE	2030mm x 2240mm x 860mm
WATER CAPACITY	1295 liters
DRY WEIGHT	261 kg
FILLED WEIGHT	1556 kg
JETPAKS	3
INDUSTRIAL PUMPS	1

5
available seats

All R Series come with Stainless Steel Jets and Acrylic JetPaks

SERIES

AFFORDABLE LUXURY

R6



6
available seats

SIZE	2030mm x 2240mm x 860mm
WATER CAPACITY	1295 liters
DRY WEIGHT	261 kg
FILLED WEIGHT	1556 kg
JETPAKS	3
INDUSTRIAL PUMPS	1

All R Series come with Stainless Steel Jets and Acrylic JetPaks

R5L

R SERIES

AFFORDABLE LUXURY



SIZE	1730mm x 2130mm x 790mm
WATER CAPACITY	890 liters
DRY WEIGHT	206 kg
FILLED WEIGHT	1196 kg
JETPAKS	2
INDUSTRIAL PUMPS	1

3
available seats

All R Series come with Stainless Steel Jets and Acrylic JetPaks







STIL

CONTEMPORARY LUXURY



Elegantly modern, STIL™ represents a new concept in holistic wellness and contemporary spa design. Understated elegance and clean lines the STIL™ is unlike any other spa in the market today.

STIL7

SIZE 2.24m x 2.13m x 860m
WATER CAPACITY 1488 liters
DRY WEIGHT 299 kg
FILLED WEIGHT 1787 kg
INDUSTRIAL PUMPS 1



3

custom JetPaks

6

available seats

1

STIL™ waterfall



STIL5

SIZE 1.69m x 2.08m x 790m
WATER CAPACITY 947 liters
DRY WEIGHT 207 kg
FILLED WEIGHT 1456 kg
INDUSTRIAL PUMPS 1



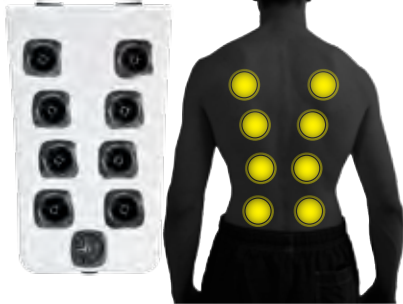
3
custom JetPaks

4
available seats

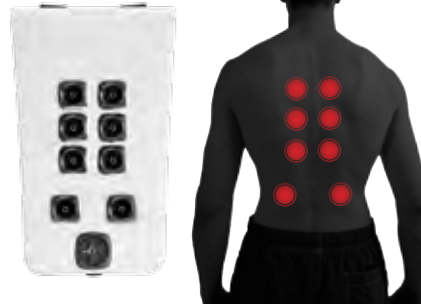
1
STIL™ waterfall

JetPaks® STIL

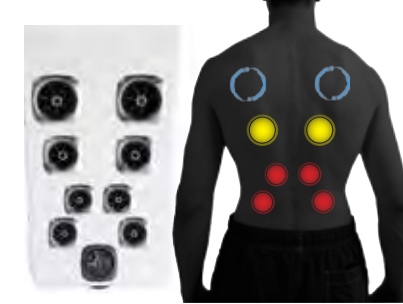
Alleviate



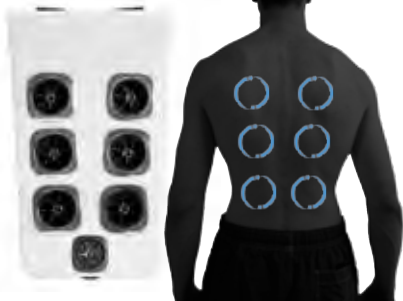
SpinalHealth



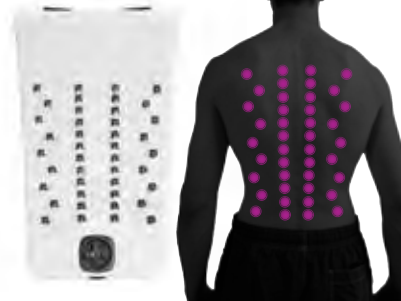
Wellness



Pulsator



RainShower



Oscillator



*NeckBlaster and NeckMasseuse not available in matte black JetPaks.

MASSAGE TYPE

● Powerful DeepRelief Jets



○ Kneading Oscillator Jets
● Relaxing FirmRelief Jets

○ Rhythmic Single Pulse Jets

○ Rapid Dual Pulse Jets

● Soothing RainShower Jets

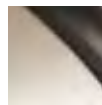
● DeepRelief Neck Jets





SWIM SPAS

PREMIUM LUXURY



Exercise in your own private, convenient and relaxed environment. Swim Spas provide the perfect alternative to a pool.



254

4

advanced
3400 litres per minute
swim



7

available seats

SIZE	5800mm x 2300mm x 1320mm
WATER CAPACITY	8000 liters
DRY WEIGHT	950 kg
FILLED WEIGHT	8950 kg
INDUSTRIAL PUMPS	4
ECO FILTRATION PUMP	1

252



SIZE	5800mm x 2300mm x 1320mm
WATER CAPACITY	8000 liters
DRY WEIGHT	950 kg
FILLED WEIGHT	8950 kg
INDUSTRIAL PUMPS	2
ECO FILTRATION PUMP	1

7
available seats

251

2
lounges

5800mm
length



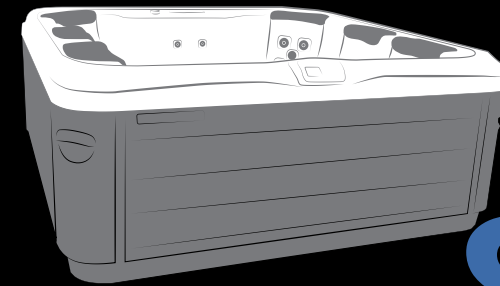
SIZE	5800mm x 2300mm x 1320mm
WATER CAPACITY	8000 liters
DRY WEIGHT	950 kg
FILLED WEIGHT	8950 kg
INDUSTRIAL PUMPS	1

EFFICIENCY PERFECTED

BULLFROG SPAS USE **90%** LESS PLUMBING



BULLFROG SPAS USE



85% LESS WATER*



THAN TAKING A WARM BATH

BULLFROG SPAS USE



154watts

30% LESS ENERGY**



224watts

THAN CONVENTIONAL SPAS

** Comparison based on 1360 litres Bullfrog Spas compared to average energy use of spas of approximate size. (Plus or minus 70 litres)

*Comparison based on filling a standard sized bath tub half way every day over a 5 month period.

UNMATCHED QUALITY

Our commitment to quality begins with the solid ABS EnduraBase™ foundation. The 100% wood-free EnduraFrame support structure is precision-built with a composite material that is impervious to moisture. Other conventional spas still use wood or metal framing that can rot, warp, or corrode. With a Bullfrog Spa, you have no need to worry about the elements.

The ultra-durable 3 layer spa shell is designed to last a lifetime. This incredibly strong shell is further supported by energy smart, full foam insulation. In all areas of design and manufacturing your Bullfrog Spa is built to last and is backed by our comprehensive warranty.

WARRANTY

	A SERIES	R SERIES
EnduraFrame & Base	Life	Life
Shell Structure	10 yrs.	7 yrs.
Shell Surface	2 yrs.	2 yrs.
Components JetPaks Cabinet	2 yrs.	2 yrs.
Lighting Stereo System Ozone System	1 yr.	1 yr.

Wood-Free EnduraFrame™



- Full Foam Insulation
- High-Density Polyurethane
- ABS Rigidiser
- Acrylic Spa Shell



*EnduraBase U.S. Patent #8,881,321

SPA OPTIONS

INTERIOR FEATURES	A Series	R Series	STIL	Swim Spas	DESCRIPTION
JetPak Therapy System	Standard	Standard	Standard	N/A	Choose from 16 unique JetPaks to customise your spa. JetPaks can be interchanged at any time.
Durable 3-Layer Spa Shell	Standard	Standard	Standard	Standard Fibreglass	Beautiful acrylic surface is chemically bonded to a tough ABS layer and then backed with a dense coat of polyurethane rigidiser.
Wood-Free EnduraFrame	Standard	Standard	Standard	Standard Metal	This precision-formed ABS frame is strong, durable, and moisture proof. No rotting or warping.
Electronic Spa Control	Standard All-Touch	Standard R600	N/A	Standard Spa Touch	USA made Balboa control systems feature color screens (A900) and easy menu driven control of your spa.
Auxiliary Jet Control	Standard	N/A	N/A	Standard	Turn on jets to low or high from any place in the spa with these simple one-touch control buttons.
Brushed Stainless Steel Jets	Standard	Standard	Standard	Polished	Enhance the look of your spa with beautiful brushed stainless steel jet faces.
Interior LED Mood Lighting	Standard	Standard	Standard	Standard	Improve your relaxation experience with multi-colored in-spa LED lighting. Multiple modes for solid colours, fading in and out, or quickly changing colours to suit your preferences.
Touch Control	Optional	N/A	Standard	N/A	A full colour, touch controller that provides simple, and intuitive spa control.
Perimeter Cup Holders	Standard Backlit	Standard	N/A	N/A	Your A series cup holders are visible, even at night, with a lighted JetPak logo.
Water Feature	Standard Cascadia	Standard pop-up	Standard	Standard	Enjoy the soothing sounds of falling water and fun with a Cascadia waterfall or pop-up water feature.
ComfortFit Pillows	Premier	Standard	Standard	Standard	Comfort engineered spa pillows designed to support your relaxation position.
Elite Audio System	Optional	Optional	Optional	Optional	Rich quality sound with a powered sub-woofer, in-spa speakers, compatibility with multiple digital music players, Bluetooth, wireless remote, FM radio.

EXTERIOR FEATURES	A Series	R Series	STIL	Swim Spas	DESCRIPTION
EnduraBase	Standard	Standard	Standard	Standard	ABS base is moisture proof and 100% wood-free. Includes convenient electrical chase ways, screens to keep out pests, molded hand holds, and an easy exterior drain.
Energy Smart Full Foam Insulation	Standard	Standard	Standard	Optional	Less plumbing in our design allows for more polyurethane insulation, which fills all dead air spaces and creates a higher R-value to lock in heat.
EternaWood Cabinet	Standard	Standard	Standard	Standard	100% wood-free spa cabinet. Weather resistant and requires no maintenance.
Exterior LED Lighting	Standard	N/A	Standard	N/A	LED sconce exterior lights are an important safety feature for nighttime spa use.

EQUIPMENT FEATURES	A Series	R Series	STIL	Swim Spas	DESCRIPTION
2.5 HP/4.8 BHP Industrial Jet Pumps	Standard	Standard	Standard	Standard	Industrial-grade pumps operate longer, quieter and use less energy.
WellSpring Water Care System	N/A	Standard	N/A	N/A	Designed to provide the optimum amount of circulation and filtration. Includes 2 oversized spa filters that are protected by Microban Antimicrobial Technology which inhibits the growth of harmful bacteria for maximum water purity.
WellSpring Filtration Pump	Standard	Optional	Standard	Standard	Dedicated and programmable filtration pump improves water quality with virtually silent operation. (N/A model A5L & R5L)
WellSpring High-Output Ozone	Standard	Standard	Standard	Standard	Featuring Advanced Plasma Gap technology that consistently helps keep your spa clean while reducing the need for other spa care products.
CloudControl™	Optional	Optional	Optional	Optional	An Android or iOS app allows you to operate your spa from your smartphone or Wi-Fi enabled device. Monitor and control your spa from anywhere in the world.
CoverMate I Cover Lifter	Optional	Optional	Optional	N/A	The CoverMate Cover Lifter makes it easy for even one person to lift your spa cover. Also creates a privacy shield on one side when in the lifted position.
DuraSteps	Optional	Optional	Optional	Optional	Durable composite steps in coordinating colors make it easy and safe to get in and out of your spa.

A SERIES

A8



2390mm x 2390mm x 970mm
Power Required 32 amps

A8L



2390mm x 2390mm x 970mm
Power Required 32 amps

A8D



2390mm x 2390mm x 970mm
Power Required 32 amps

A7



2240mm x 2240mm x 910mm
Power Required 32 amps

R SERIES

R8



2240mm x 2240mm x 910mm
Power Required 32 amps

R8L



2240mm x 2240mm x 910mm
Power Required 32 amps

R7



2240mm x 2240mm x 910mm
Power Required 32 amps

R7L



2240mm x 2240mm x 910mm
Power Required 32 amps

A7L



2240mm x 2240mm x 910mm
Power Required 32 amps

A6L



2030mm x 2240mm x 860mm
Power Required 23 amps

A5L



1730mm x 2130mm x 790mm
Power Required 23 amps

STIL7



2240mm x 2130mm x 860mm
Power Required 23 amps

R6L



2030mm x 2240mm x 860mm
Power Required 23 amps

R5L



1730mm x 2130mm x 790mm
Power Required 23 amps

STIL5



1690mm x 2080mm x 790mm
Power Required 23 amps

Swim Spa 254



5800mm x 2300mm x 1320mm
Power Required Fully Loaded 63 amps
Load Shed 38 amps

Swim Spa 252



5800mm x 2300mm x 1320mm
Power Required Fully Loaded 44 amps
Load Shed 26 amps

Swim Spa 251



5800mm x 2300mm x 1320mm
Power Required Fully Loaded 34 amps
Load Shed 26 amps

Colour Selection

Customise Your Bullfrog Spa with Your Choice of Colours

Bullfrog Spas are all about creating your perfect personal spa experience. This doesn't just apply to our JetPak Therapy System.

You will also be able to choose from a full range of beautiful colour choices to suit your landscape, home, and personal tastes.

Choose the spa shell colour, cabinet colour and hard cover colour you like and make your spa the perfect expression of your style.

Spa Interior & JetPaks

Acrylic Colour

Platinum	Mirage	Pearl	Midnight Canyon
Snow (STIL ONLY)			

Cabinet Colour - STANDARD		Cabinet Colour - PREMIUM	
Driftwood	Mahogany	Slate	Ivory

Hardcover Colour - Spas

Sienna	Graphite	Sterling (STIL ONLY)
--------	----------	----------------------

Swim Spa Interior

Acrylic Colour

Sterling Marble	Pearl Shadow	Ocean Wave
-----------------	--------------	------------

EternaWood Cabinet Colour

Coastal Grey	Moroccan Brown	Teak
--------------	----------------	------

Hardcover Colour - Swim Spas

Granite	Chocolate	Espresso
---------	-----------	----------



bullfrog[™]
spas

Spa Industries Global

6-16 Keppel Drive, Hallam, Victoria Australia 3803
Tel: +61 3 9702 3144 Fax: +61 3 9702 3540

www.spaindustries.com.au

Specifications subject to change without notice
©2017 Bullfrog International, L.C. All rights reserved

**Protected by Multiple Patents Worldwide
Product of North America**

Available at



Your Authorised Bullfrog Spas Dealer

www.justspas.com.au

1300 JUST SPAS